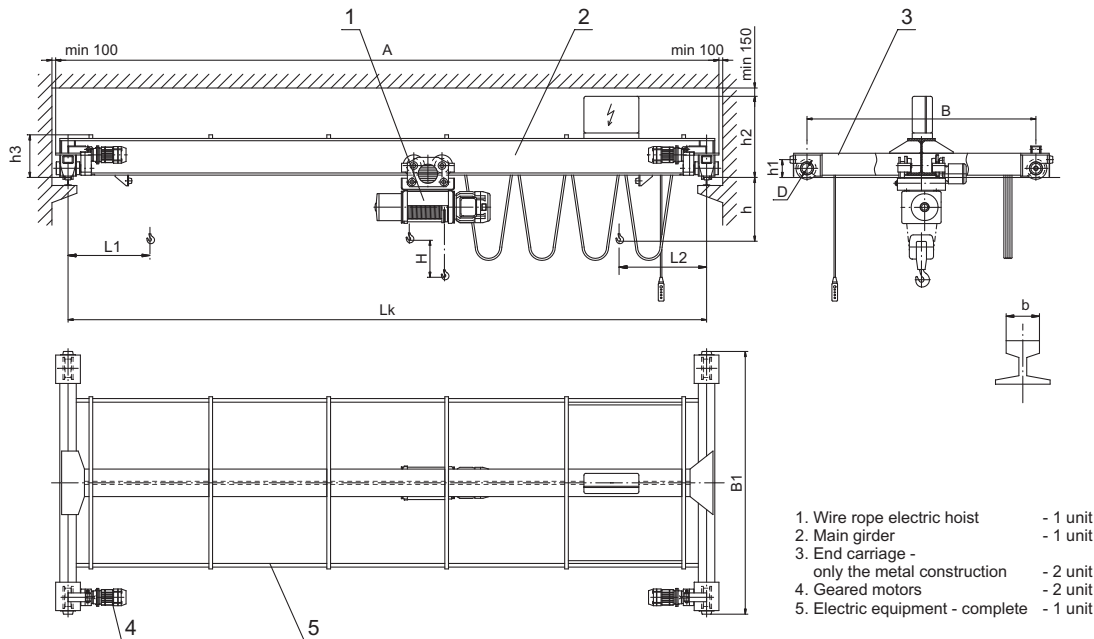


SINGLE GIRDER STANDING CRANES - LIGHT TYPE

Main parameters and dimensions

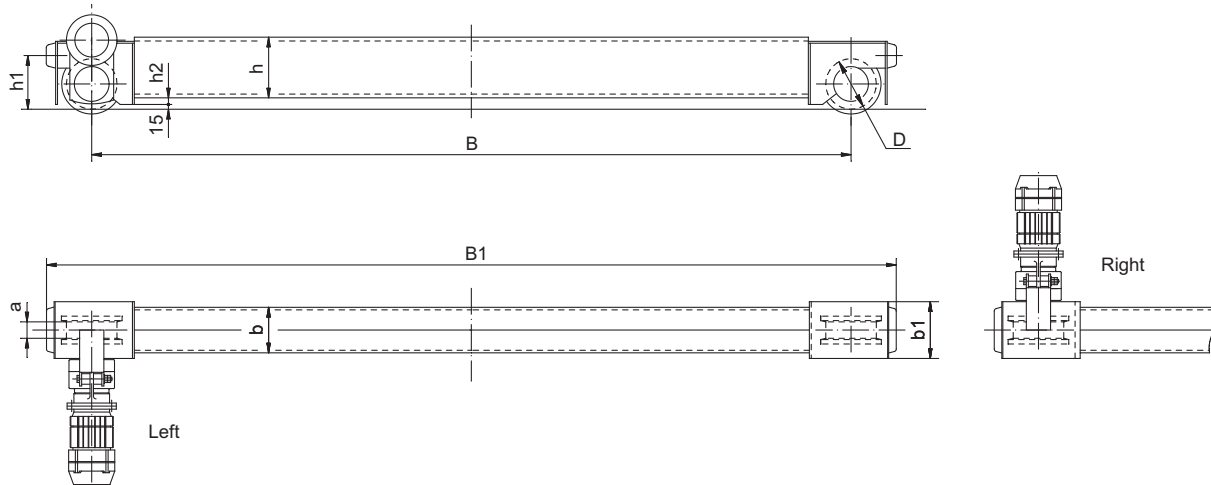


Designation	Capacity, Q	Span Lk	Lifting height H	Speeds			Dimensions									Rmax (Maximum pressure on travel wheel)
				of lift	of crab	of crane	A	B	B1	D	b	h	h1	h2	h3	
-	t	m		m/min			mm									kN
MEA 1/7,5	1	7,5	5 ... 51	8 8/2	20 20/6	20/6	7740	1600	1938	160	40	990	160	735	335	11,5
MEA 1/10,5		10740					2000	2338	735					335	13	
MEA 1/13,5		13740					2700	3038	755					355	14	
MEA 1/16,5		13740					2700	3038	755					355	14	
MEA 2/7,5	2	7,5	5 ... 45	8 8/2	20 20/6	20/6	7740	1600	1938	160	40	1190	160	735	335	19
MEA 2/10,5		10740					2000	2338	775					375	20	
MEA 2/13,5		13740					2700	3038	795					395	21	
MEA 2/16,5		13740					2700	3038	795					395	21	
MEA 3,2/7,5	3,2	7,5	5 ... 37	8 8/2	20 20/6	20/6	7740	1600	1938	160	40	1260	160	775	375	27
MEA 3,2/10,5		10740					2000	2338	805					405	28	
MEA 3,2/13,5		13740					2700	3038	875					475	30	
MEA 3,2/16,5		13740					2700	3038	875					475	30	
MEA 5/7,5	5	7,5	7 ... 40	8 8/2	20 20/6	20/6	7740	1600	1938	160	40	1535	160	805	405	38
MEA 5/10,5		10740					2000	2338	865					465	40	
MEA 5/13,5		13740					2700	3038	895					495	41	
MEA 5/16,5		13740					2700	3038	895					495	41	
MEA 6,3/7,5	6,3	7,5	5 ... 18	4 4/1	20 20/6	20/6	7770	1600	1978	200	50	1210	200	865	465	46
MEA 6,3/10,5		10770					2000	2378	925					525	48	
MEA 6,3/13,5		13770					2700	3078	955					555	49	
MEA 6,3/16,5		13770					2700	3078	955					555	49	
MEA 8/7,5	8	7,5	7 ... 34	8 8/2	20 20/6	20/6	7770	1600	1978	200	50	1640	200	925	525	57
MEA 8/10,5		10770					2000	2378	955					555	60	
MEA 8/13,5		13824					2700	3196	1015					615	61	
MEA 8/16,5		13824					2700	3196	1015					615	61	

Remarks:

*) Sizes L1 and L2 depend on the hoist type and the lifting height

End carriages



Designation	Capacity, Q	Span Lk	Speeds	Geared motor		Dimensions								
				Type	Output kW	D	B	B1	a	b	b1	h	h1	h2
-	t	m	m/min	-	kW	mm								
MEA 02-00	1	7,5	20/6	TP1160-35 T80A-12/4	0,08/0,25	160	1600	1938	55	116	240	140	160	60
MEA 02-01		2000					2338	128		160		40		
MEA 02-02		2700					3038	140		180		20		
MEA 02-03		3000					3338	152		200		35		
MEA 02-04	2	7,5	20/6	TP1160-35 T80B-12/4	0,12/0,37	160	1600	1938	55	128	240	160	160	40
MEA 02-05		2000					2338	140		180		20		
MEA 02-06		2700					3038	164		220		20		
MEA 02-07		3000					3338	164		220		20		
MEA 02-08	3,2	7,5	20/6	TP1200-35 T90S-12/4	0,18/0,55	160	1600	1938	55	152	240	200	160	40
MEA 02-09		2000					2338	164		220		30		
MEA 02-10		2700					3038	180		240		40		
MEA 02-11		3000					3338	190		270		40		
MEA 02-12	5	7,5	20/6	TP1200-35 T90S-12/4	0,18/0,55	160	1600	1938	55	164	240	220	160	30
MEA 02-13		2000					2338	180		240		30		
MEA 02-14		2700					3038	190		270		20		
MEA 02-15		3000					3338	200		300		20		
MEA 02-16	6,3	7,5	20/6	TP1250-46 T90S-12/4	0,18/0,55	200	1600	1978	65	164	270	220	200	30
MEA 02-17		2000					2378	180		240		50		
MEA 02-18		2700					3078	200		300		30		
MEA 02-19		3000					3378	200		300		30		
MEA 02-20	8	7,5	20/6	TP1250-46 T90S-12/4	0,18/0,55	200	1600	1978	65	180	270	240	200	50
MEA 02-21		2000					2378	190		270		30		
MEA 02-22		TP1250-54 T90S-12/4		2700	3196	250	210	324		330		250	40	
MEA 02-23				3000	3496		220			360			30	
MEA 02-24	10	7,5	20/6	TP1250-54 T90S-12/4	0,18/0,55	250	1600	2096	65	220	324	360	250	30
MEA 02-25		2000					2496	220		360		30		
MEA 02-26		2700					3196	230		400		30		
MEA 02-27		3000					3496	230		400		30		